

General

The NavInc interfaces allow for connecting video sources to the original navigation system of Nissan.

The interface ensures that an input is created on the original navigation system, on which various external video sources can be connected (e.g. DVD player, DVB-T TV, iPod, reversing camera, external navigation systems, etc.). The images will be displayed on the navigation screen. The audio of the video sources must be submitted via an AUX input or FM modulator.

It is possible to switch between the different video sources via the included button, remote control and / or 12V switch wire.



Features

- RGB input (Connecting external navigation system)
- 3x Audio/Video input (connect video sources, TV / DVD / iPod)
- Camera input (connecting reversing camera)
- Video output (connect headrest screens)
- PAL / NTSC support (auto detection)
- Audio output (audio link to the original audio system or audio interface)
- Image retention while driving
- Adjustable parking lines
- Audio Select
- CE-approved



OSD menu

Through the interface menu, various settings can be adjusted for optimal image, namely;

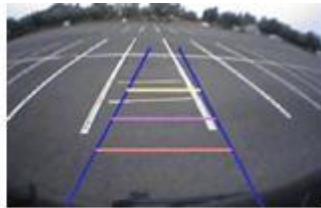
- Tint
- Brightness
- Contrast
- Sharpness
- Display position

Camera function

Via the camera input of the interface an aftermarket camera system can be connected to the navigation system. The camera image will be displayed automatically on the screen when the car is put in the reverse gear.

Parking guidelines

In the camera image on screen parking guidelines can be displayed. This makes it much easier to determine the distance to the object you are driving towards. The guidelines are adjustable horizontal as well as vertical so the lines can be adjusted to the car.



Ajustable guide lines

Video output

The video output connection can be used for linking headrest monitors or roof monitors. Sources connected to the interface will also be shown on the screens in the back.

The following is provided in the set:

- NavInc Video Interface IF-INFIN-GV1
- Cable set
- Installation- and user manual
- Warranty
- Invoice

Additional information:

- Check at the tab "compatibility" on top of this page if your radio or navigation system is suitable for this product.
- The connected video sources must support NTSC video signals.
- Audio of the connected video source must be linked to the AUX input of car, FM modulator, USB or iPod interface.

- No constant voltage needed (+30) therefore the interface is much more stable.
- Use of a metal casing and new components (not Chinese or remanufactured components).

Product specifications

Voltage: 12V – 16V DC

Voltage-operating capacity: 8 – 18V DC

Standby current: 0 mA

Operating current: 12 Watt max.

Power input: 12V

Temperature range: - 30°C up to + 80°C

Weight: 250grs

Dimensions(W x H x D): 130 x 20 x 102mm

Legal information:

The driver of the vehicle should not be inferred from the motion images. In many countries, watching movies while driving is prohibited. Therefore we accept no responsibility for material or personal injuries, directly or indirectly, due to installation of the interface modules.

Interface and Software basic information:

The NavInc interfaces are no navigation systems or screens to replace the navigation system. The NavInc interfaces enable the possibilities to connect different Audio/Video sources to the navigation system.

Manufacturers create adjusted software and hardware versions, options and enhancements which ensures that the compatibility of the products cannot be guaranteed 100%. Compatibility lists are based on customer feedback and experiences and will constantly be updated for optimal customer support.

Suitable for the following models

Infinity

EX35	2011-2013	8.5" touch screen navigation system
FX35	2010-2012	8.5" touch screen navigation system
FX37	2013-2013	8.5" touch screen navigation system
FX45	2010-2012	8.5" touch screen navigation system
FX50	2009-2013	8.5" touch screen navigation system
G37	2010-2013	8.5" touch screen navigation system
M37/M56/M35	2011-2012	8.5" touch screen navigation system
QX56	2011-2012	8.5" touch screen navigation system

Nissan

Armada	2010-2014	8.5" Touchscreen navigation system (HDD)
Continental GTR	2010-2014	8.5" Touchscreen navigation system (HDD)
370Z	2010-2014	8.5" Touchscreen navigation system (HDD)
Maxima	2011-2014	8.5" Touchscreen navigation system (HDD)
Murano	2012-2014	8.5" Touchscreen navigation system (HDD)

Pathfinder	2010-2014	8.5" Touchscreen navigation system (HDD)
Quest	2010-2014	8.5" Touchscreen navigation system (HDD)

*OEM navigation must be installed

Remarks:

- Only in combination with OEM 30GB HDD navigation system
- Only suitable for navigation systems with 3-pins monitor cable. Installation is Plug and Play
- Installation also possible in combination with original TV tuner
- AUX-output of the interface should be connected with an AUX interface or the AUX input of the car
- Installation also possible in combination with original reversing camera
- Also possible to use the interface stand alone for reversing and/or forward driving camera function
- Automatic switching to camera on all levels
- Installation of the interface is behind the monitor of the unit

Image of monitor cable:



Image of suitable navigation systems:

350Z 2010



370Z 2010



GTR 2010



Maxima 2010



Murano 2010



Pathfinder 2010

