

## General

The NavInc interfaces allow for connecting video sources to the original navigation system of Mercedes.



The interface ensures that an input is created on the original navigation system, on which various external video sources can be connected (e.g. DVD player, DVB-T TV, iPod, reversing camera, external navigation systems, etc.). The images will be displayed on the navigation screen. The audio of the video sources must be submitted via an AUX input or FM modulator.

It is possible to switch between the different video sources via the included button, remote control and/or 12V switch cable.

## Features

- RGB input (Connecting external navigation system)
- 3x Audio/Video input (connect video sources, TV / DVD / iPod)
- Camera input (connecting reversing camera)
- Video output (connect headrest screens)
- PAL / NTSC support (auto detection)
- Audio output (audio link to the original audio system or the audio interface)
- Image retention while driving
- Adjustable parking lines
- Activation interface via OEM button
- CE-approved



## OSD menu

Through the interface menu, various settings can be adjusted for optimal image, namely;

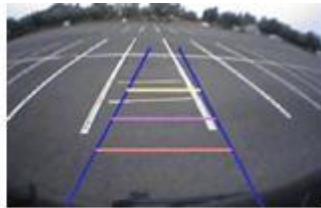
- Tint
- Brightness
- Contrast
- Sharpness
- Display position

### **Camera function**

Via the camera input of the interface an aftermarket camera system can be connected to the navigation system. The camera image will be displayed automatically on the screen when the car is put in the reverse gear.

### **Parking guidelines**

In the camera image on screen parking guidelines can be displayed. This makes it much easier to determine the distance to the object you are driving towards. The guidelines are adjustable horizontal as well as vertical so the lines can be adjusted to the car.



**Adjustable guide lines**

### **Video output**

The video output connection can be used for linking headrest monitors or roof monitors. Sources connected to the interface will also be shown on the screens in the back.

### **Activation**

It is possible to switch between the AV inputs on the interface in several ways, namely;

- Via OEM "return" button
- Via the included remote control
- Via the included switch



**The following is provided in the set:**

- NavInc Video Interface IF- MB-NTG40V
- Cable set
- Installation- and user manual
- Warranty
- Invoice

**Product specifications**

Voltage: 12V – 16V DC

Voltage-operating capacity: 8 – 18V DC

Standby current: 0 mA

Operating current: 12 Watt max.

Power input: 12V

Temperature range: - 30°C up to + 80°C

Weight: 250grs

Dimensions(W x H x D): 130 x 20 x 102mm

**Additional information:**

- Check at the tab “compatibility” on top of this page if your radio or navigation system is suitable for this product.
- The connected video sources must support PAL or NTSC video signals
- Audio of the connected video source must be linked to the AUX input of car, FM modulator, USB or iPod interface.
- No constant voltage needed (+30) therefore the interface is much more stable.
- Use of a metal casing and new components (not Chinese or remanufactured components).

**Legal information:**

The driver of the vehicle should not be inferred from the motion images. In many countries, watching movies while driving is prohibited. Therefore we accept no responsibility for material or personal injuries, directly or indirectly, due to installation of the interface modules.

**Interface and Software basic information:**

The NavInc interfaces are no navigation systems or screens to replace the navigation system. The NavInc interfaces enable the possibilities to connect different Audio/Video sources to the navigation system.

Manufacturers create adjusted software and hardware versions, options and enhancements which ensures that the compatibility of the products cannot be guaranteed 100%. Compatibility lists are based on customer feedback and experiences and will constantly be updated for optimal customer support.

## Suitable for the following models

### Mercedes

A Class (W176)	2012-2015	Comand Online & Audio20 (Becker)
B Class (W246)	2012-2015	Comand Online & Audio20 (Becker)
C Class (W204)	2011-2014	Comand Online & Audio20 (Becker)
C Class Coupe (C204)	2011-2015	Comand Online & Audio20 (Becker)
CLA Class (C117)	2013-2015	Comand Online & Audio20 (Becker)
CLS Class (C218)	2010-2015	Comand Online & Audio20 (Becker)
CLS Class Shooting	2012-2015	Comand Online & Audio20 (Becker)
G-model (G463)	2012-2016	Comand Online & Audio20 (Becker)
GL-Class (X166)	2012-2016	Comand Online & Audio20 (Becker)
GLA (X156)	2014-2015	Comand Online & Audio20 (Becker)
GLK Class (X204)	2011-2015	Comand Online & Audio20 (Becker)
E Class (W212)	2011-2015	Comand Online & Audio20 (Becker)
E Class (C207 Coupe)	2011-2016	Comand Online & Audio20 (Becker)
ML Class (W166)	2011 -2015	Comand Online & Audio20 (Becker)
SLK Class (R172)	2011-2015	Comand Online & Audio20 (Becker)
SL Class (R231)	2012-09/2015	Comand Online & Audio20 (Becker)

### Extra information:

- In combination with Comand NTG4 Online navigation system, Audio20 & Audio20 + Becker navi
- Suitable for 7" & 5.8" monitors
- Installation also possible in combination with original TV Tuner.
- Automatic switching to camera is possible.
- Audio of the connected video source must be linked to the AUX input of car, FM modulator, USB or iPod interface.
- Installation of the interface is behind the navigation screen.

### Image of suitable navigation systems:

#### C-Class



#### C coupe

