

## DESCRIPTION

### General

Upgrade your Mazda with CARPLAY & ANDROID Auto to your existing system. You can run apps from your iPhone Via CarPlay & Android Auto without touching your iPhone. You can control this kit via the priginal MZD touch screen and via voice control (Siri).

Complete Apple CARplay & Android retrofit into the Porsche system without change nor removal anything from the vehicle. Simply connect your iPhone to the USB port and you can start using it.

### Example video

### Features

- Control via original MZD touch screen
- Control via voice (Siri & Google Assistant)
- Run navigation apps like; Google maps, TomTom & Waze
- Play music apps like; Spotify, Podcast, Music
- Making phone calls and listening to your messengers
- HDMI input
- Rear camera input
- Front camera input
- AV input
- Original button support
- Picture while driving
- 2 Year warranty & Support

## EXCLUSIVE CARPLAY & ANDROID AUTO FEATURES

### Navigation with Apple Maps / Waze GPS app

Free turn-by-turn navigation with lane guidance, live traffic conditions, points of interest, and more

### Hands-free phone and messaging

Make calls and send messages without taking your hands off the wheel, via Phone and iMessage

### Info and assistance

Get weather, traffic, commute information and more organized into simple cards

**Bring your music**

Listen to your music and playlists in the car with your built-in stereo system

**EXCLUSIVE INTERFACE FEATURES**

---

**Features:**

- HDMI input
- 2\* AV input
- Reverse Camera input
- Front camera input
- Image retention while driving
- Adjustable parking lines
- OSD menu

**Activation via OEM**

Activation interface via original button:

MZD



Section	Button	Operation	Function
MZD	NAVI	Long Press	Mode switch
	MUSIC	Short Press	Returning to OEM
	HOME	Short Press	<u>Returning to OEM</u>
	STAR	Short Press	<u>Returning to OEM</u>

**STEERING WHEEL**



Section	Button	Operation	Function
MZD	HANG UP	Long Press	Mode switch

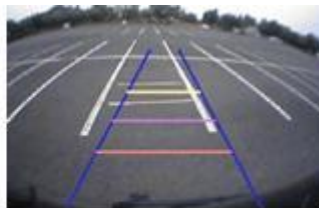
## CAMERA FEATURES

### Rear camera input with Parking guidelines

Rear camera input with parking guidelines option.

The guidelines makes it much easier to determine the distance to the object you are driving towards.

The guidelines are adjustable horizontal as well as vertical so the lines can be adjusted to the car.



**Ajustable guide lines**

### Picture In Picture (PIP)

Camera with Picture in Picture of the Parking assist



### Intelligent Park Assist System (IPAS)

The interface have also the Intelligent Park Assist System (iPAS). With this function the guidelines will respond on the steering wheel position. The guide lines are adjustable horizontal and vertical via the interface OSD menu.



### Front camera input

Front camera input which will be selected after leaving the reverse gear.

Via the OSD menu you can select show time:

- 3 sec
- 5 sec
- 10 sec
- 15 sec

### NOTES

---

- It is essential to have an Aux-in
- We recommend that the installation will be performed by a qualified specialist
- Check the other tabs for "Compatibility" - "Package contents" - "Product specifications"

### LEGAL INFORMATION

---

The driver of the vehicle should not be inferred from the motion images. In many countries, watching movies while driving is prohibited. Therefore we accept no responsibility for material or personal injuries, directly or indirectly, due to installation of the interface modules.

Interface and Software basic information:

The NavInc interfaces are no navigation systems or screens to replace the navigation system. The NavInc interfaces enable the possibilities to connect different Audio/Video sources to the navigation system.

Manufacturers create adjusted software and hardware versions, options and enhancements which ensures that the compatibility of the products cannot be guaranteed 100%. Compatibility lists are based on customer feedback and experiences and will constantly be updated for optimal customer support.

### COMPATIBILITY

---

#### CAR

This kit is compatible with the following models:

#### Mazda

Mazda 2	2014-20..	MZD Connect system
---------	-----------	--------------------

Mazda 3	2014-20..	MZD Connect system
Mazda 6	2015-20..	MZD Connect system
CX-3	2014-20..	MZD Connect system
CX-4	2016-20..	MZD Connect system
CX-5	2015-20..	MZD Connect system
CX-9	2017-20..	MZD Connect system
MX-5	2014-20..	MZD Connect system
Miata	2016-20..	MZD Connect system

## **Fiat**

124 Spider*	2019-20..	MZD Connect system
-------------	-----------	--------------------

## **Note:**

- It is essential to have an Aux-in
- We recommend that the installation will be performed by a qualified specialist
- If you have Original Carkit & Audio streaming option via bluetooth, AUX input is not needed

## **ANDROID AUTO**

---

Your Phone must be compatible with Android AUTO & Androi Auto app must be available in your county.

An Android phone running Android 5.0 (Lollipop) and up with a data plan. For best performance, we recommend Android 6.0 (Marshmallow) and up. You can check your phone's software version by looking at the About Device section under Settings

Please check the following link for more info about Android Auto:

[LINK](#)

Apps you can use with Android Auto:

[LINK](#)

If your country is not supported (app is not available in Google Playstore) please see the following link how to get the App:

[LINK](#)

## **APPLE CARPLAY**

---

Your Phone must be compatible with Apple Carplay.

CarPlay is compatible with these iPhone models.

- iPhone XSiPhone ten s
- iPhone XS MaxiPhone ten s Max
- iPhone XRiPhone ten r
- iPhone X

- iPhone 8
- iPhone 8 Plus
- iPhone 7
- iPhone 7 Plus
- iPhone 6s
- iPhone 6s Plus
- iPhone 6
- iPhone 6 Plus
- iPhone SE
- iPhone 5s
- iPhone 5c
- iPhone 5

Please check the following link for more info about Apple Carplay:

[LINK](#)