



## DESCRIPTION

---

### General

The NavInc NAVconnect interfaces allow for connecting video sources to the original Iveco Daily 2019 Uconnect 7" screen.

The interface is equipped with various options such as; 1\* RGB input, 1\* Video input, 1\* Front camera input, 1\* Rear camera input & 1\*LVDS input.

### *Example video*

### Features

- 1x RGB / LVDS input (to connectd NAVplay Android)
- 1x Video input
- 1x Rear camera input
- 1x Front camera input (with auto switch OFF)
- Original touchscreen support for NAVplay Android
- Picture while driving
- 2 Year warranty & Support

## EXCLUSIVE INTERFACE FEATURES

---

### Features:

- AV input
- Reverse Camera input
- Front camera input
- Image retention while driving
- Adjustable parking lines
- OSD menu

## CAMERA FEATURES

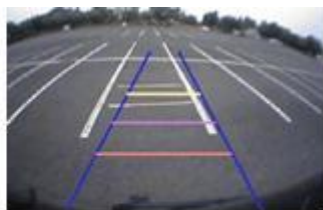
---

### Rear camera input with Parking guidelines

Rear camera input with parking guidleines option.

The guidelines makes it much easier to determine the distance to the object you are driving towards.

The guidelines are adjustable horizontal as well as vertical so the lines can be adjusted to the car.



**Ajustable guide lines**

### **Front camera input**

Front camera input which will be selected after leaving the reverse gear.

Via the OSD menu you can select show time:

0 - 30 seconds

### **NOTES**

---

- It is essential to have an Aux-in
- We recommend that the installation will be performed by a qualified specialist
- Check the other tabs for "Compatibility" - "Package contents" - "Product specifications"

### **LEGAL INFORMATION**

---

The driver of the vehicle should not be inferred from the motion images. In many countries, watching movies while driving is prohibited. Therefore we accept no responsibility for material or personal injuries, directly or indirectly, due to installation of the interface modules.

Interface and Software basic information:

The NavInc interfaces are no navigation systems or screens to replace the navigation system. The NavInc interfaces enable the possibilities to connect different Audio/Video sources to the navigation system.

Manufacturers create adjusted software and hardware versions, options and enhancements which ensures that the compatibility of the products cannot be guaranteed 100%. Compatibility lists are based on customer feedback and experiences and will constantly be updated for optimal customer support.

### **COMPATIBILITY**

---

#### **CAR**

This kit is compatible with the following models:

#### **Iveco**

Daily

2019-20..

Uconnect (7")

**Note:**

- It is essential to have an Aux-in when using multimedia source
- We recommend that the installation will be performed by a qualified specialist
- If you have Original Carkit & Audio streaming option via bluetooth, AUX input is not needed

**REQUIREMENT**

<b>AUDIO</b>	The interface inserts ONLY video signals into the infotainment. It is essential to have an Aux-in, when using audio from an external AV source.
<b>CVBS</b>	Only compatible with NTSC sources.
<b>GUIDELINES</b>	Static lines are available via the interface OSD menu
<b>OEM REAR CAMERA</b>	The interface does not switch back automatically to the OEM rear camera input when the reverse gear is engaged
<b>FRONT CAMERA</b>	The front camera input will automatically switch after leaving the reverse gear. You can set the display time in seconds via the OSD menu (1-30 sec). It is also possible to select the FRONT camera input manually
<b>SCREEN</b>	Interface is compatible with 7" monitors
<b>INSTALLER</b>	We recommend that the installation will be performed by a qualified specialist