

## **Multimedia Video interface Rover RGB navigatiesystemen**

**Art. Nr:** IF-BMW-V1

---

### **General**

The NavInc interfaces allow for connecting video sources to the original navigation system of Rover

The interface ensures that an input is created on the original navigation system, on which various external video sources can be connected (e.g. DVD player, DVB-T TV, iPod, reversing camera, external navigation systems, etc.). The images will be displayed on the navigation screen. The audio of the video sources must be submitted via an AUX input or FM modulator.

If multiple audio / video sources are connected to the audio input you can switch to audio via the "Audio Select" option.

It is possible to switch between the different video sources via the included button and/or 12V switch cable.

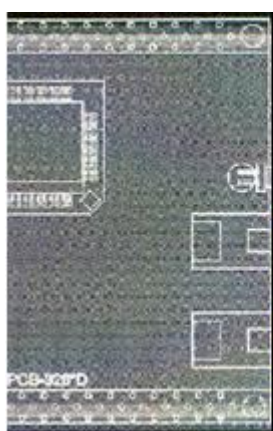
The interface is equipped with external connections:

- Camera input; for the connection or reversing camera with automatic activation (activation through 12V trigger cable)
- Video input; for the connection of a video source. Activation via an external switch.



## Features

- 1x video input (connect video sources, TV / DVD / iPod)
- Camera input (connecting reversing camera)
- PAL & NTSC support
- Positive and negative synchronization
- Sync in green support
- Adjustable brightness of output signals
- By pass mode (RGB-in)
- Image retention while driving
- CE-approved



V1 Video input 1

V2 Camera input

## The following is provided in the set:

- NavInc AV-Interface

- Cable set
- Installation- and user manual
- Warranty
- Invoice

### **Additional information:**

- Check at the tab “compatibility” on top of this page if your radio or navigation system is suitable for this product.
- The connected video sources must support NTSC video signals.
- Audio of the connected video source must be linked to the AUX input of car, FM modulator, USB or iPod interface.
- No constant voltage needed (+30) therefore the interface is much more stable.
- Use of a metal casing and new components (not Chinese or remanufactured components).

### **Product specifications**

Voltage: 12V - 24V DC

Standby current: 0 mA

Operating current: 150 mA

Power input: 12V

Temperature range: - 30°C up to + 70°C

Weight: 200grs

Dimensions(W x H x D): 77 x 30 x 94mm

### **Legal information:**

The driver of the vehicle should not be inferred from the motion images. In many countries, watching movies while driving is prohibited. Therefore we accept no responsibility for material or personal injuries, directly or indirectly, due to installation of the interface modules.

### **Interface and Software basic information:**

The NavInc interfaces are no navigation systems or screens to replace the navigation system. The NavInc interfaces enable the possibilities to connect different Audio/Video sources to the navigation system.

Manufacturers create adjusted software and hardware versions, options and enhancements which ensures that the compatibility of the products cannot be

guaranteed 100%. Compatibility lists are based on customer feedback and experiences and will constantly be updated for optimal customer support.

### **Suitable for the following models**

#### **Rover**

Rover 25	1999-2005	MK1-4 navigation
Rover 45	1999-2005	MK1-4 navigation
Rover 75 (46)	2004-2005	MK1-4 navigation
Rover 75 Tourer (44)	2004-2005	MK1-4 navigation

#### **Remarks:**

- Only in combination with OEM navigation system and separate navigation computer.
- Installation also possible in combination with original TV tuner.
- AUX-output of the interface needs to be connected with AUX interface or AUX input of the car.
- Installation in combination with original reversing camera also possible.
- Also possible to use the interface stand alone for reversing and/or forward driving camera function.
- Automatic switching to camera on navigation level.

#### **Image of suitable navigation systems:**

