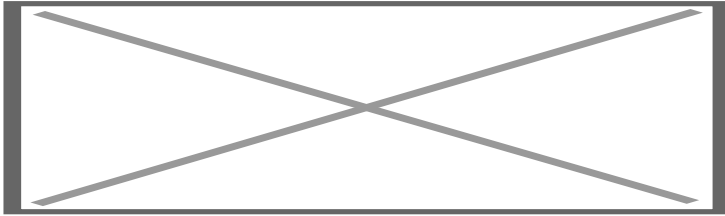


Rear camera interface Audi Q3 (F3) & A1 (GB) with 8.8" monitor

Art. Nr: RC-AUDI-Q388



DESCRIPTION

General

The NavInc NAVconnect interfaces allow for connecting video sources to the original Connect NAV system of Audi A1 & Q3.

The interface is equipped with various options such as; 1* Front camera input & 1* Rear camera input.

Example video

Features

- 1x Rear camera input
- iPAS (dynamic parking lines)
- 1x Front camera input (with auto switch OFF)
- 2 Year warranty & Support

EXCLUSIVE INTERFACE FEATURES

Features:

- Reverse Camera input
- Front camera input
- Image retention while driving
- Adjustable parking lines
- OSD menu

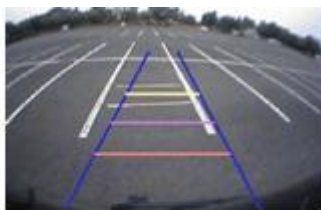
CAMERA FEATURES

Rear camera input with Parking guidelines

Rear camera input with parking guidelines option.

The guidelines makes it much easier to determine the distance to the object you are driving towards.

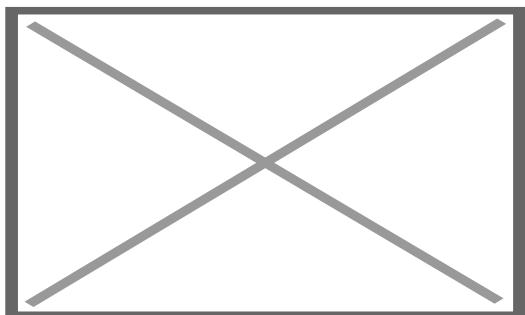
The guidelines are adjustable horizontal as well as vertical so the lines can be adjusted to the car.



Ajustable guide lines

Intelligent Park Assist System (IPAS)

The interface have also the Intelligent Park Assist System (iPAS). With this function the guidelines will respond on the steering wheel position. The guide lines are adjustable horizontal and vertical via the interface OSD menu.



Front camera input

Front camera input which will be selected after leaving the reverse gear.

Via the OSD menu you can select show time:

- 3 sec
- 5 sec
- 10 sec
- 15 sec

NOTES

- We recommend that the installation will be performed by a qualified specialist
- Check the other tabs for "Compatibility" - "Package contents" - "Product specifications"

LEGAL INFORMATION

The driver of the vehicle should not be inferred from the motion images. In many countries, watching movies while driving is prohibited. Therefore we accept no responsibility for material or personal injuries, directly or indirectly, due to installation of the interface modules.

Interface and Software basic information:

The NavInc interfaces are no navigation systems or screens to replace the navigation system. The NavInc interfaces enable the possibilities to connect different Audio/Video sources to the navigation system.

Manufacturers create adjusted software and hardware versions, options and enhancements which ensures that the compatibility of the products cannot be guaranteed 100%. Compatibility lists are based on customer feedback and experiences and will constantly be updated for optimal customer support.

COMPATIBILITY

CAR

This kit is compatible with the following models:

Audi

A1 (GB)	2018-2020	MMI Radio Plus of MMI Navigation Plus (8.8")
Q3 (F3)	2019-2020	MMI Radio Plus of MMI Navigation Plus (8.8")

Note:

- We recommend that the installation will be performed by a qualified specialist

