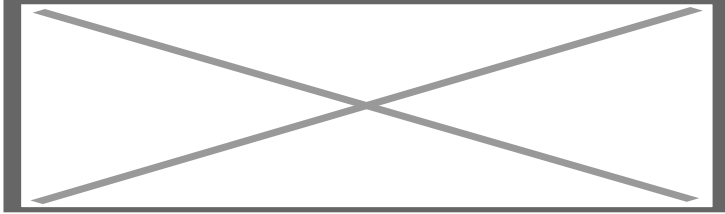


## Multimedia HDMI interface Ford SYNC4

Art. Nr: IF-FOR-SN4PHV

---



### DESCRIPTION

---

#### General

The NavInc NAVconnect interfaces allow for connecting video sources to the original Ford SYNC4 system.

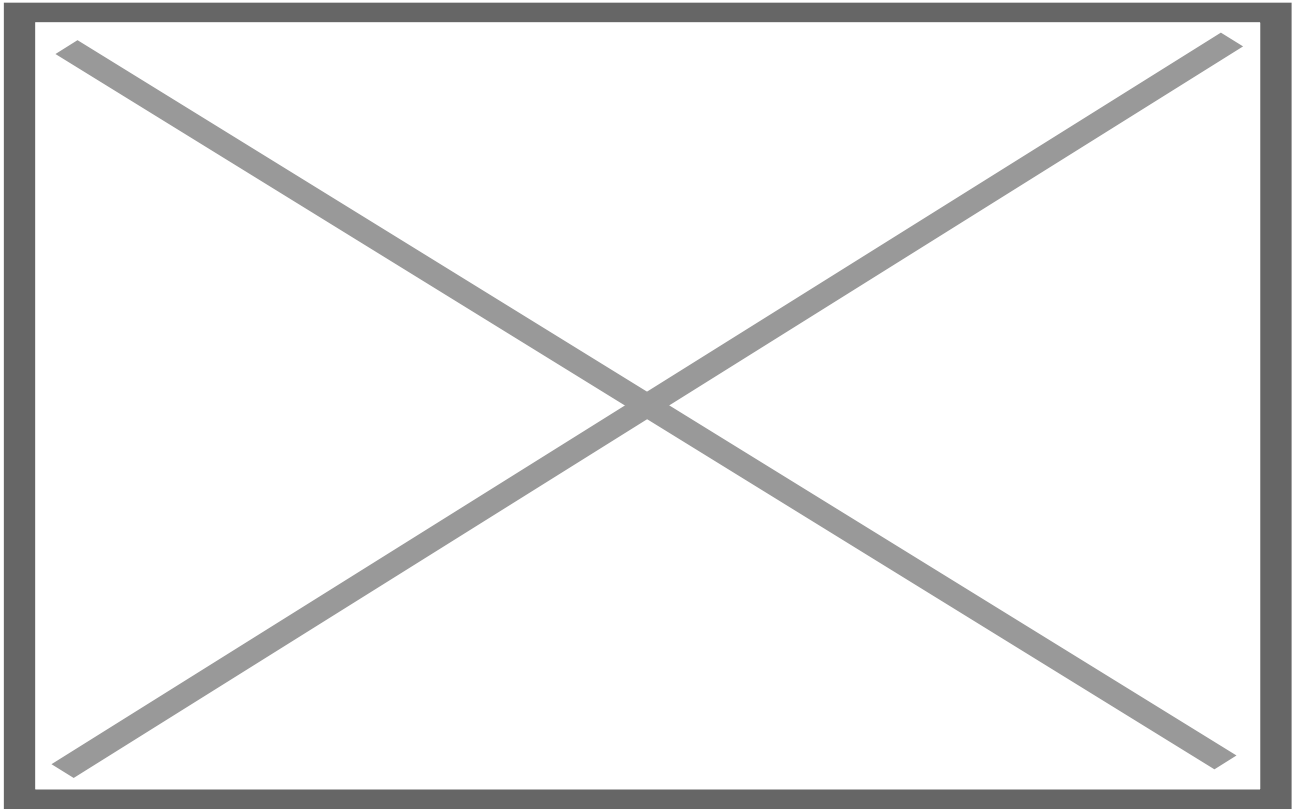
#### Features

- Rear camera input
- Front camera input (with auto switch OFF)
- Side view camera input (left/right)
- Side view camera's responding on the lefti/right indicator
- LVDS input (to connect APPplay & NAVplay)
- HDMI input
- Adjustubele parking lines via OSD menu
- iPAS lines (moveable gridlines)
- Steering wheel button support
- 3 Year warranty & Support

#### *Example video*

#### OEM BUTTON

---



## **CAMERA FEATURES**

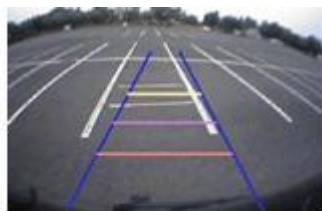
---

### **Rear camera input with Parking guidelines**

Rear camera input with parking guidelines option.

The guidelines makes it much easier to determine the distance to the object you are driving towards.

The guidelines are adjustable horizontal as well as vertical so the lines can be adjusted to the car.



**Ajustable guide lines**

### **Front camera input**

Front camera input which will be selected after leaving the reverse gear.

Via the OSD menu you can select show time:

- 3 sec
- 5 sec
- 10 sec

## **NOTES**

---

- We recommend that the installation will be performed by a qualified specialist
- Check the other tabs for "Compatibility" - "Package contents" - "Product specifications"

## **LEGAL INFORMATION**

---

The driver of the vehicle should not be inferred from the motion images. In many countries, watching movies while driving is prohibited. Therefore we accept no responsibility for material or personal injuries, directly or indirectly, due to installation of the interface modules.

Interface and Software basic information:

The NavInc interfaces are no navigation systems or screens to replace the navigation system. The NavInc interfaces enable the possibilities to connect different Audio/Video sources to the navigation system.

Manufacturers create adjusted software and hardware versions, options and enhancements which ensures that the compatibility of the products cannot be guaranteed 100%. Compatibility lists are based on customer feedback and experiences and will constantly be updated for optimal customer support.