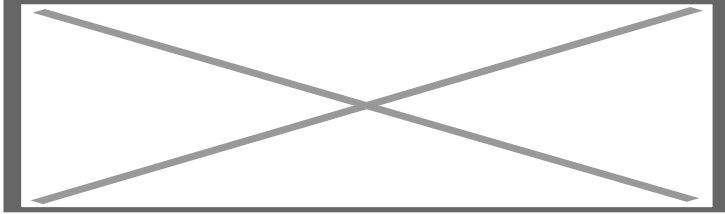


Rear & Front camera interface Mercedes Comand NTG5

Art. Nr: RC-MB-NTG5CT



DESCRIPTION

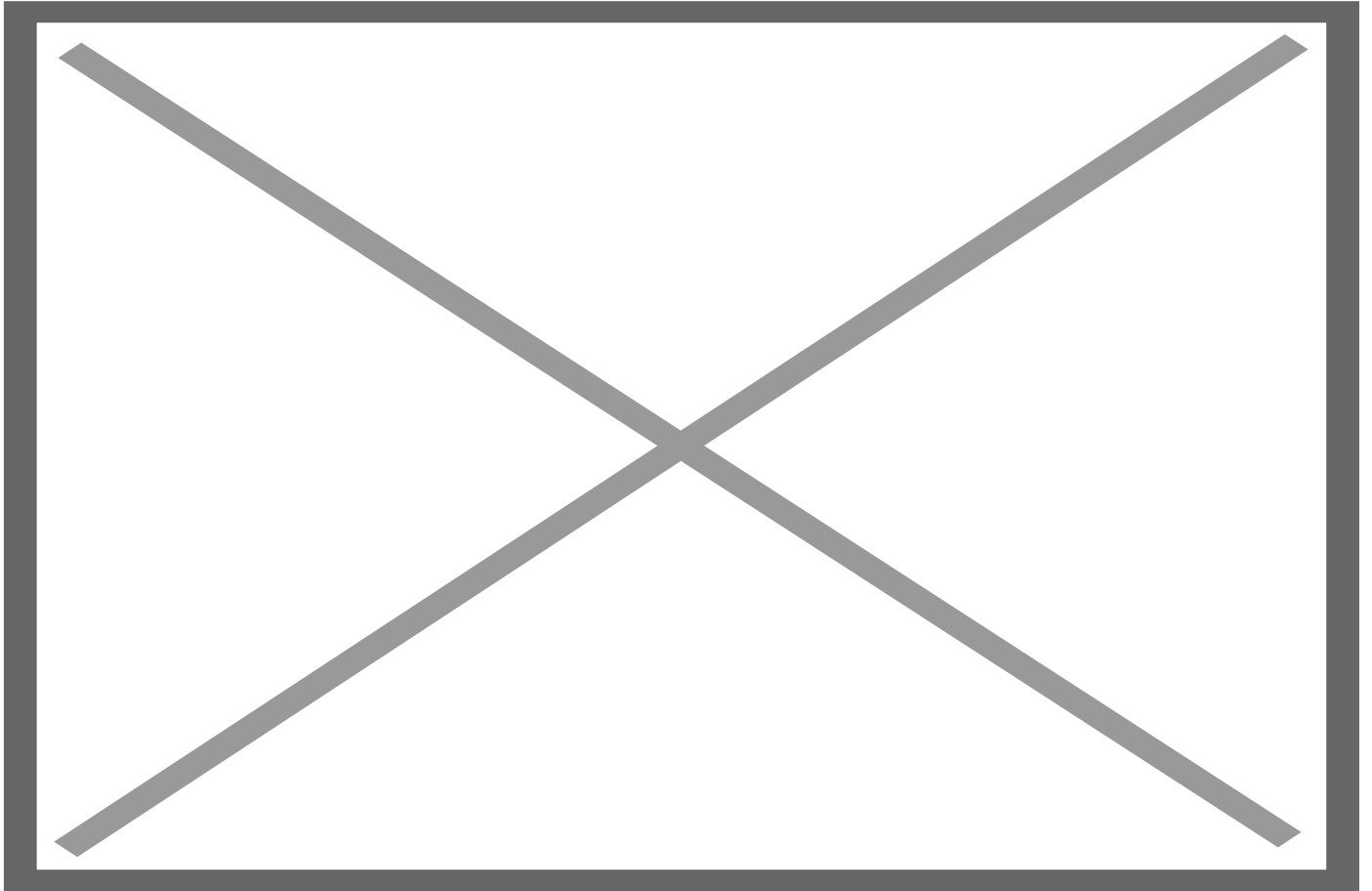
General

With the NAVconnect camera interface it is possible to connect an aftermarket Front & Rear camera to the original Comand NTG5 & Audio20 Garmin systems of Mercedes.

Features

- 1x Rear camera input
- 1x Front camera input (with auto switch OFF)
- Auto switch to rear camera input when car is in reverse
- Auto switch to front camera input when leaving reverse gear
- iPAS parking lines (moveable grid lines)
- Adjustable parking lines via OSD menu
- Picture in Picture overlay function of the original parking sensors
- OEM steering wheel button support (to activate front camera input manually)
- Support NTSC & PAL video signals
- Support Comand NTG5 & Audio20 (Garmin)
- Support DUAL VIEW monitors
- 3 Year warranty & Support

OEM BUTTON



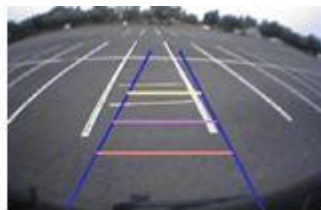
CAMERA FEATURES

Rear camera input with Parking guidelines

Rear camera input with parking guidelines option.

The guidelines makes it much easier to determine the distance to the object you are driving towards.

The guidelines are adjustable horizontal as well as vertical so the lines can be adjusted to the car.



Ajustable guide lines

Front camera input

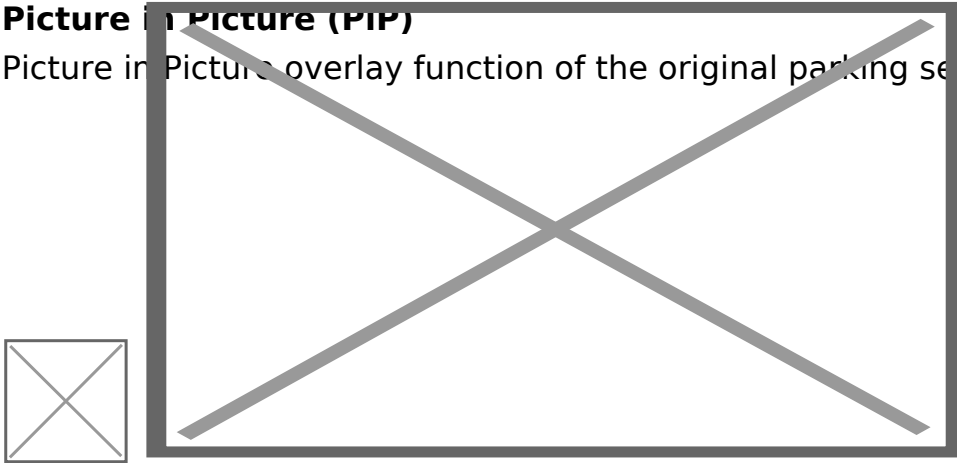
Front camera input which will be selected after leaving the reverse gear.

Via the OSD menu you can select show time:

- 3 sec
- 5 sec
- 10 sec
- 15 sec

Picture in Picture (PIP)

Picture in Picture overlay function of the original parking sensors



NOTES

- We recommend that the installation will be performed by a qualified specialist
- Check the other tabs for "Compatibility" - "Package contents" - "Product specifications"

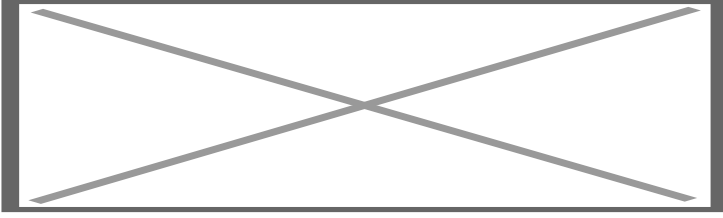
LEGAL INFORMATION

The driver of the vehicle should not be inferred from the motion images. In many countries, watching movies while driving is prohibited. Therefore we accept no responsibility for material or personal injuries, directly or indirectly, due to installation of the interface modules.

Interface and Software basic information:

The NavInc interfaces are no navigation systems or screens to replace the navigation system. The NavInc interfaces enable the possibilities to connect different Audio/Video sources to the navigation system.

Manufacturers create adjusted software and hardware versions, options and enhancements which ensures that the compatibility of the products cannot be guaranteed 100%. Compatibility lists are based on customer feedback and experiences and will constantly be updated for optimal customer support.



REQUIREMENTS
