

Boot handle camera Sony CCD - VAG NTSC - no lines (NTSC)

Art. Nr: CAM-VAG-T01N

General:

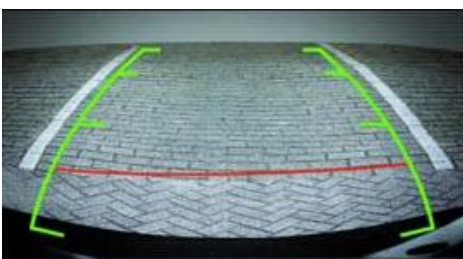
This reversing camera is specially dedicated for Audi vehicles. The inconspicuous, robust camera with Sony CCD lens simply replaces the trunk release handle. Just easy remove the existing trunk release handle and replace it with the reversing camera. The camera is complete including plug and play cable kit which allows easy plug and play installation. The camera is waterproof according to the IP67 certification level.

SONY

Besides the camera is equipped with guard lines. With these lines you can easily stipulate the distance to an object behind the car.

Features:

- 1/3" SONY CCD lens
- 600 TV lines
- Guard lines
- Lens angle 170 degrees
- Waterproof according to IP67 certification level
- Black Light Compensation
- Display in mirror image
- Automatic color correction
- Motion message



The camera shows static picture lines. These are guides to which the distance of the object can be determined where you drive your car to. Ideal for parking.

Image distortion correction

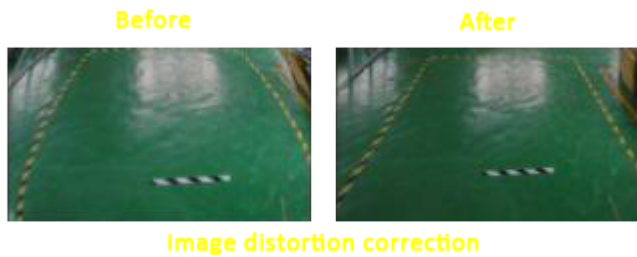


Image distortion correction

The camera runs on intelligent software. As a result the unwanted bulging in the camera image is automatically corrected.

Image color correction

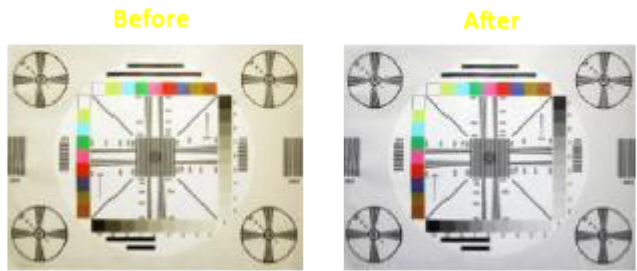


Image color correction

The camera runs on intelligent software. As a result the unwanted discolorations in the camera image is automatically corrected.

Back Light Compensation



Back Light Compensation

The camera runs on intelligent software. As a result the appearance of a bright background or lamps in the camera image is automatically corrected.

Motion message:

If there are moving objects in the image as; pedestrians, children or animals a pedestrian warning icon will blink in the upper right corner of the camera.

The following is provided in the set:

- Audi reversing camera NTSC with license plate lamp
- Video extension cable 5 meter (RCA)
- Installation manual
- Invoice
- Warranty

Additional information:

- Check before you order the camera for the compatibility on the tab "Compatibility" or the model and the measurements of the camera match with the license plate lamp.
- With a multimedia interface or video interface it is possible to connect the camera with the original navigation system, ask for the possibilities.
- Concerns a high-end SONY CCD lens, so no cheap CMOS lens

Technical features:

- IP rating: IP67 (Water proof)
- Image Sensors : Colour 1/3"SONY CCD
- TV System: NTSC
- Effective Pixels: NTSC 752x582
- Sensing Area: 4.9 × 3.7 mm
- Horizontal Resolution: 480 TV Line
- Horizontal Sync. Frequency: 15.625 / 15.734 kHz
- Vertical Sync. Frequency : 50/60 Hz
- Video output: 1Vp-p,75Ohm
- Gamma Consumption: 0.45
- Auto Gain Control: Automatic
- Back Light Compensation: Automatic
- S/N Ratio: Better than 48dB
- Lens Angle: 170 ° (Degrees)
- Current Consumption: 150mA
- Power Supply: DC +12V (10%)
- Operating Temperature: -20 C to +70 C
- Storage Temperature : -40 C to +80 C
- Connection: RCA
- Image: Mirror

Compatible with:

A4 (8K)	2008>
RS4	2008>
A5 (8T)	2007-2009
A5 Sportback	2010-2013
A7	2010-201>
TT	2006-201>
Q5 (8R)	2009-201>
A6/S6/RS6	2008-201>

****Not compatible with Audi A3
cabriolet (8V)**

Compatible with:

Passat Variant 2009-201>
Bora
Golf 5 Variant
Touran 2010-201>
Sharan 2010-201>
Tiquan 2011-2015
Touareg (7P)

* Check before you order the camera for the compatibility on the tab “Compatibility” or the model and the measurements of the camera match with the trunk release handle.

Remarks:

- The trunk release handle of the above mentioned car models may vary.
- Check before you order the camera for the compatibility on the tab “Compatibility” or the model and the measurements of the camera match with the trunk release handle.

Measurements:

The dimensions are external. The camera has the following dimensions.

- Length: 111 mm
- Width: 48 mm

