

General

The NavInc interfaces allow for connecting video sources to the original navigation system of Lexus.



The interface ensures that an input is created on the original navigation system, on which various external video sources can be connected (e.g. DVD player, DVB-T TV, iPod, reversing camera, external navigation systems, etc.). The images will be displayed on the navigation screen. The audio of the video sources must be submitted via an AUX input or FM modulator.

It is possible to switch between the different video sources via the included button, remote control and / or 12V switch wire.

Features

- RGB input (Connecting external navigation system)
- 3x Audio/Video input (connect video sources, TV / DVD / iPod)
- Camera input (connecting reversing camera)
- Video output (connect headrest screens)
- PAL / NTSC support (auto detection)
- Audio output (audio link to the original audio system or audio interface)
- Image retention while driving
- Adjustable parking lines
- Audio Select
- CE-approved



OSD menu

Through the interface menu, various settings can be adjusted for optimal image, namely;

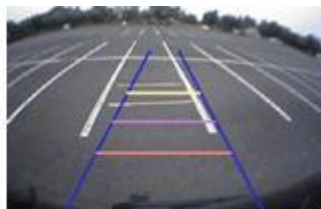
- Tint
- Brightness
- Contrast
- Sharpness
- Display position

Camera function

Via the camera input of the interface an aftermarket camera system can be connected to the navigation system. The camera image will be displayed automatically on the screen when the car is put in the reverse gear.

Parking guidelines

In the camera image on screen parking guidelines can be displayed. This makes it much easier to determine the distance to the object you are driving towards. The guidelines are adjustable horizontal as well as vertical so the lines can be adjusted to the car.



Ajustable guide lines

Video output

The video output connection can be used for linking headrest monitors or roof monitors. Sources connected to the interface will also be shown on the screens in the back.

The following is provided in the set:

- NavInc Video Interface
- Cable set
- Installation- and user manual
- Warranty
- Invoice

Additional information:

- Check at the tab "compatibility" on top of this page if your radio or navigation system is suitable for this product.
- The connected video sources must support PAL or NTSC video signals.
- Audio of the connected video source must be linked to the AUX input of car,

FM modulator, USB or iPod interface.

- No constant voltage needed (+30) therefore the interface is much more stable.

- Use of a metal casing and new components (not Chinese or remanufactured components).

Product specifications

Voltage: 12V - 24V DC

Voltage-operating capacity: 8 - 18V DC

Standby current: 0 mA

Operating current: 5 Watt max.

Power input: 12V

Temperature range: - 30°C up to + 80°C

Weight: 250grs

Dimensions(W x H x D): 130 x 20 x 102mm

Legal information:

The driver of the vehicle should not be inferred from the motion images. In many countries, watching movies while driving is prohibited. Therefore we accept no responsibility for material or personal injuries, directly or indirectly, due to installation of the interface modules.

Interface and Software basic information:

The NavInc interfaces are no navigation systems or screens to replace the navigation system. The NavInc interfaces enable the possibilities to connect different Audio/Video sources to the navigation system.

Manufacturers create adjusted software and hardware versions, options and enhancements which ensures that the compatibility of the products cannot be guaranteed 100%. Compatibility lists are based on customer feedback and experiences and will constantly be updated for optimal customer support.

Compatible for the following models

Lexus

ES	2009-2013	8.5" HDD touch screen navigation system
GS	2009-2012	8.5" HDD touch screen navigation system
GX	2009-20..	8.5" HDD touch screen navigation system
ISC	2009-20..	8.5" HDD touch screen navigation system
SC	2009-2010	8.5" HDD touch screen navigation system
IS	2009-2013	8.5" HDD touch screen navigation system
LS	2009-2013	8.5" HDD touch screen navigation system
LX	2009-20..	8.5" HDD touch screen navigation system
RX	2009-2012	8.5" HDD touch screen navigation system

**OEM Park Assist and/or camera must be available*

***switching Park Assist / Rear camera must be +12V analog*

Remarks:

- Only in combination with OEM Lexus touch screen HDD navigation system.
- Only for Lexus models with OEM reversing camera or OEM Park Assist.
- When using an OEM camera input or Park Assist input the reversing signal must be analog.
- Installation also possible in combination with original TV tuner
- Installation is Plug & Play
- Automatic switching to camera on navigation level.
- The connected video sources must support PAL or NTSC video signals.
- Audio of the connected video source must be linked to the AUX input of car, FM modulator, USB or iPod interface.
- Installation of the interface is behind the monitor.

Image of suitable navigation systems:**Lexus****ES****GS**



GS Hybrid



GS



HS Hybrid



IS



ISF



SC



LS



LS Hybrid



LX



RX



RX Hybrid

