

General

The NavInc interfaces allow for connecting video sources to the original CDR31 radio system of Porsche.

The interface ensures that an input is created on the original navigation system, on which various external video sources can be connected (e.g. DVD player, DVB-T TV, iPod, reversing camera, external navigation systems, etc.). The images will be displayed on the navigation screen. The audio of the video sources must be submitted via an AUX input or FM modulator.



It is possible to switch between the different video sources via the included button, remote control and/or +12V switch wire.

Besides the interface creates an audio select +12V signal on every video input. This means:

If Video input (V1) is selected, then on the audio select cable of V1 will be a +12V signal. The audio select cable of V1 needs to be connected with the DVD player or DVB-T tuner. This in order to switch on the devices when Video input 1 (V1) is selected. As Video input 2 (V2) is selected, the source on V1 will be switched off and the source on V2 will be switched on. This enables also to switch the audio.

Features

- RGB input (Connecting external navigation system)
- 3x Audio/Video input (connect video sources, TV / DVD / iPod)
- Camera input (connecting reversing camera)
- Video output (connect headrest screens)
- PAL/NTSC support (auto detection)
- Audio output (audio link to the original audio system or audio interface)
- Audio select output (audio/video selection port)
- Image retention while driving
- Adjustable parking lines
- CE-approved



OSD menu

Through the interface menu, various settings can be adjusted for optimal image, namely;

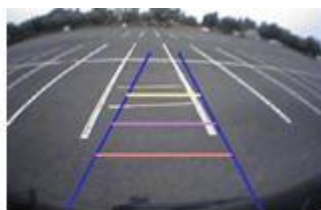
- Tint
- Brightness
- Contrast
- Sharpness
- Display position

Camera function

Via the camera input of the interface an aftermarket camera system can be connected to the navigation system. The camera image will be displayed automatically on the screen when the car is put in the reverse gear.

Parking guidelines

In the camera image on screen parking guidelines can be displayed. This makes it much easier to determine the distance to the object you are driving towards. The guidelines are adjustable horizontal as well as vertical so the lines can be adjusted to the car.



Ajustable guide lines

Video output

The video output connection can be used for linking headrest monitors or roof monitors. Sources connected to the interface will also be shown on the screens in the back.

Activation:

It is possible to switch between the AV inputs on the interface in different ways:

- Via OEM "return" button (red)
- Via the scroll wheel button (blue) the direction of the inputs can be determined
- Via the delivered remote control
- Via the delivered switch



The following is provided in the set:

- NavInc Video Interface IF-PO-CDR31V
- Cable set
- Installation- and user manual
- Warranty
- Invoice

Product specifications

Voltage: 12V - 24V DC

Voltage-operating capacity: 8 - 18V DC

Standby current: 0 mA

Operating current: 12 Watt max.

Power input: 12V

Temperature range: - 30°C up to + 80°C

Weight: 250grs

Dimensions(W x H x D): 130 x 20 x 102mm

Additional information:

- Check at the tab "compatibility" on top of this page if your radio or navigation system is suitable for this product.
- The connected video sources must support PAL or NTSC video signals.
- Audio of the connected video source must be linked to the AUX input of car, FM modulator, USB or iPod interface.
- No constant voltage needed (+30) therefore the interface is much more stable.
- Use of a metal casing and new components (not Chinese or remanufactured components).

Legal information:

The driver of the vehicle should not be inferred from the motion images. In many countries, watching movies while driving is prohibited. Therefore we accept no responsibility for material or personal injuries, directly or indirectly, due to installation of the interface modules.

Interface and Software basic information:

The NavInc interfaces are no navigation systems or screens to replace the navigation system. The NavInc interfaces enable the possibilities to connect different Audio/Video sources to the navigation system.

Manufacturers create adjusted software and hardware versions, options and enhancements which ensures that the compatibility of the products cannot be guaranteed 100%. Compatibility lists are based on customer feedback and experiences and will constantly be updated for optimal customer support.

Suitable for the following models**Porsche**

Boxster	2012-20..	CDR31 radio system without navigation
Cayenne E2	2010-20..	CDR31 radio system without navigation
Cayman	2013-20..	CDR31 radio system without navigation
911 Carrera	2011-20..	CDR31 radio system without navigation
911 Carrera cabriolet	2012-20..	CDR31 radio system without navigation
Macan	2014-20..	CDR31 radio system without navigation
Panamera	2009-20..	CDR31 radio system without navigation

Remarks:

- Only in combination with CDR31 radio system.
- Installation also possible in combination with original TV tuner.
- Unit must be opened for installation of the interface.
- Automatic switching to camera is possible.
- The connected video sources must support PAL or NTSC video signals.
- Audio of the connected video source must be linked to the AUX input of car, FM modulator, USB or iPod interface.

CD31

