

NAVcam

heavy duty cameras



DESCRIPTION

Heavy duty HD camera; Front/Rear/Side; 1280x960 (NTSC)

Features

- 1/3.2" SONY CMOS HD Color Sensor
- Vibration & impact resistant housing
- All view direction applicable (via rotary key)
- IP69K Waterproof rating
- 150 degrees lens (Wide field of view)
- WDR (Wide Dynamic Range)
- High End Night View (0.0Lux) with 8* LEDs
- Anti-glare & ghost
- Voltage range (5V-32V)
- Extreme Temp. Durability
 - Operating: -30°C ~ 60°C
 - Storing Temp. : -40°C ~ 80°C
- Din metal screw lock
- Front/Rear/Side mounting
- CE-mark
- FCC-mark
- 2 Year warranty & Support

EXCLUSIVE CAMERA FEATURES

Highest Quality lens

High End 1/3.2" SONY CMOS HD Color Sensor with 1280*960 resolution

SONY

IR leds

The camera is equipped with 8* IR nightvision leds.

- Auto ON/OFF by a brightness detecting sensor
- Progressive Brightness adjustment

-Wider & Longer illuminating range by a patented designed front glass



Mirror & Unmirror adapter

The camera is equipped with an mirror & Unmirror adapter

- adapter not installed is Unmirror view
- adapter installed is mirror view



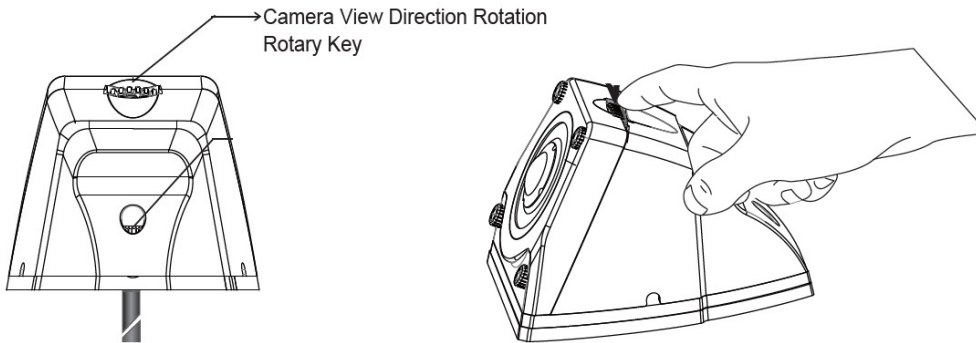
All View Direction

All view direction applicable (Left, Right, Back or Inner backward)

- Front / Rear / Side mounting

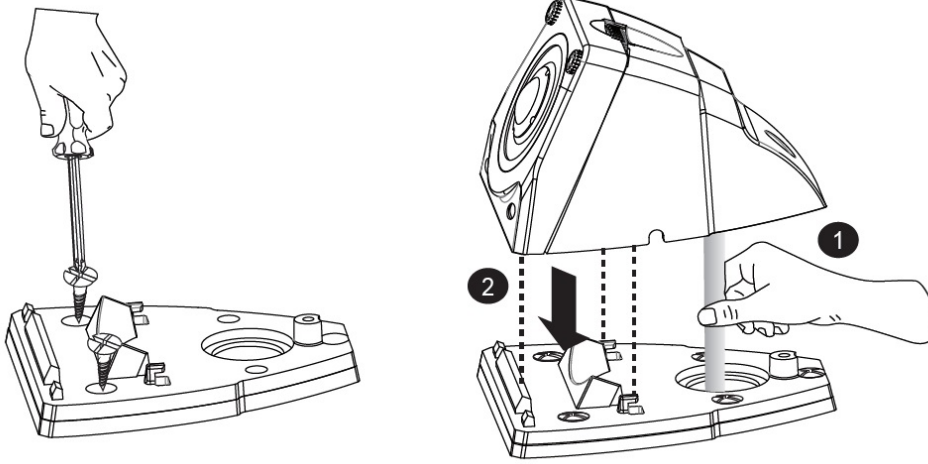
Rotary Key

All view direction applicable (Left, Right, Back or Inner backward) just by rotating the camera via the Rotary Key



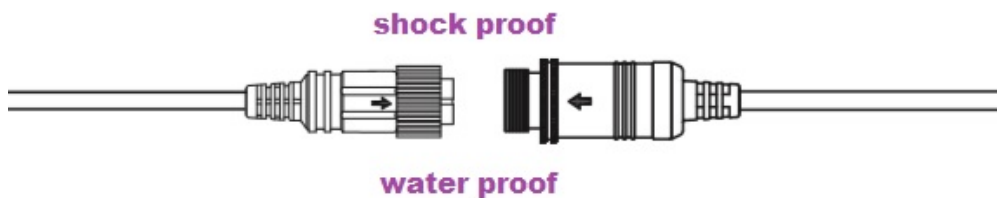
Easy fix

Easy installation via fixing plate.



Metal screw lock

Water- & shock proof 4-pins mini din screw lock connector.



Ignition proof (+15)

It is possible to connect the powersupply to an ignition feed (+15), because we use the highest quality camera.

In this way you are able to watch the camera also in DRIVE gear or via manual selection.

NOTES

- We recommend that the installation will be performed by a qualified specialist
- Check also the other tabs for "Compatibility" - "Package contents" - "Product specifications"

LEGAL NOTICE

Please check before purchase if it is aloud to install this camera and it wont affect your MOT.



COMPATIBILITY

Universal use
Only for rear installation

NOTES

- CVBS signal is NTSC