



DESCRIPTION

General

The NavInc NAVconnect interfaces allow for connecting video sources to the original MIB2 Entry system of Seat/Skoda/Volkswagen.

The interface is equipped with various options such as; 1* HDMI input, RGB input, 2* Audio/video input, 1* Front camera input, 1* Rear camera input

Example video

Features

- 1x Rear camera input
- Adjustable parking lines
- 1x Front camera input (with auto switch OFF)
- 2 Year warranty & Support

EXCLUSIVE INTERFACE FEATURES

Features:

- RGB input (Connecting NAVplay system)
- High resolution display via HDMI input
- 2x Audio/Video input (connect audio/video sources like; TV / DVD / iPod)
- Rear camera input with iPAS (dynamic parking lines)
- Front camera input (with auto switch OFF)
- Video output (connect headrest screens)
- NTSC support
- Audio output (audio link to the original audio system)
- Image retention while driving
- Adjustable parking lines
- Control external devices (DVD/DTV) via Multi Media Touch GUI

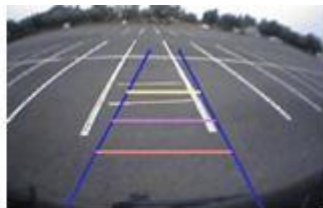
CAMERA FEATURES

Rear camera input with Parking guidelines

Rear camera input with parking guidelines option.

The guidelines makes it much easier to determine the distance to the object you are driving towards.

The guidelines are adjustable horizontal as well as vertical so the lines can be adjusted to the car.



Ajustable guide lines

Front camera input

Front camera input which will be selected after leaving the reverse gear.

Via the OSD menu you can select show time:

- 3 sec
- 5 sec
- 10 sec
- 15 sec

NOTES

- We recommend that the installation will be performed by a qualified specialist
- Check the other tabs for "Compatibility" - "Package contents" - "Product specifications"

LEGAL INFORMATION

The driver of the vehicle should not be inferred from the motion images. In many countries, watching movies while driving is prohibited. Therefore we accept no responsibility for material or personal injuries, directly or indirectly, due to installation of the interface modules.

Interface and Software basic information:

The NavInc interfaces are no navigation systems or screens to replace the navigation system. The NavInc interfaces enable the possibilities to connect different Audio/Video sources to the navigation system.

Manufacturers create adjusted software and hardware versions, options and enhancements which ensures that the compatibility of the products cannot be guaranteed 100%. Compatibility lists are based on customer feedback and experiences and will constantly be updated for optimal customer support.

COMPATIBILITY

CAR

This kit is compatible with the following models:

Seat

Arona (K17)	2017-20..	MIB2 Entry - Media System Touch (6.5")
Ibiza (6)	2018-20..	MIB2 Entry - Media System Touch (6.5")
Leon (5F)	2018-20..	MIB2 Entry - Media System Touch (6.5")
Toledo (KG)	2018-20..	MIB2 Entry - Media System Touch (6.5")

Skoda

Fabia (NJ)	2018-20..	MIB2 Entry - Radio Swing (6.5")
Octavia (5E)	2018-20..	MIB2 Entry - Radio Swing (6.5")
Rapid (NH1)	2018-20..	MIB2 Entry - Radio Swing (6.5")
Superb (3V)	2018-20..	MIB2 Entry - Radio Swing (6.5")

Volkswagen

Golf 7	2018-20..	MIB2 Entry - Composition Colour (6.5")
Golf 7 Sportsvan	2018-20..	MIB2 Entry - Composition Colour (6.5")
Polo (AW1)	2018-20..	MIB2 Entry - Composition Colour (6.5")
T-roc (A11)	2018-20..	MIB2 Entry - Composition Colour (6.5")
Tiguan (AD1)	2018-20..	MIB2 Entry - Composition Colour (6.5")
Touran (5T)	2018-20..	MIB2 Entry - Composition Colour (6.5")