



## DESCRIPTION

### General

Brake light camera Toyota Pro-ace\_Citroen Jumpy\_Peugeot Expert 2016>  
(NTSC) with SONY CCD Lens.

### Features

- Sony CCD Lens
- Resolution 976 x 494 pixels (NTSC)
- 650-700 TV lines
- Ignition Power proof (+15)
- IP68 Waterproof
- E-mark certification: E9-10R.05.1811
- CE-mark: EN 55022: 2010; EN 61000-3-2:2006+A1:2009+A2:2009;  
EN61000-3-3:2008; EN 55024:2010
- FCC-mark: ANSI C63.4-2003
- 2 Year warranty & Support

## EXCLUSIVE CAMERA FEATURES

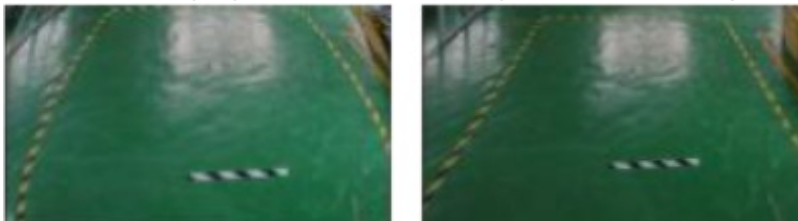
### SONY CCD

High End SONY CCD Lens, highest quality brake light camera lens in the market.

# SONY

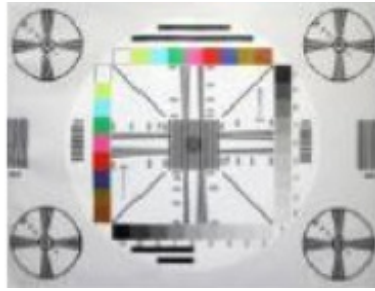
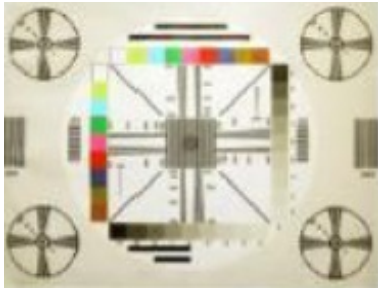
### Bulging auto correction

Unwanted bulging in the camera image is automatically corrected.



### Discoloration auto correction

Unwanted discolorations in the camera image is automatically corrected.



### **Overlighting auto correction**

The appearance of a bright background or lamps in the camera image is automatically corrected.



### **Ignition Power proof (+15)**

It is possible to connect the powersupply to an ignition feed (+15), because we use the highest quality camera.

In this way you are able to watch the camera also in DRIVE gear or via manual selection.

### **NOTES**

---

- We recommend that the installation will be performed by a qualified specialist
- Check also the other tabs for "Compatibility" - "Package contents" - "Product specifications"

### **LEGAL NOTICE**

---

Please check before purchase if it is aloud to install this camera and it wont affect your MOT.



### **COMPATIBILITY**

---

#### **CAR**

This camera is compatible with the following vehicles:

**Renault**

Trafic (II) 2001-2014 (with barn doors)

**Opel**

Combo (C) 2001-2011 (with barn doors)

Vivaro (A) 2001-2014 (with barn doors)

**Nissan**

Primastar (with barn doors)

**NOTES**

---

- RCA output = male
- CVBS signal is NTSC