



DESCRIPTION

General

Extend your existing PSA NAC system with a complete Android system for multimedia and navigation and enjoy all your favourite apps in the car. All the original features are retained.

The interface is equipped with various options such as; navigation, USB connection for film and music, Carplay/Android Auto, WiFi, Audio/video input, camera input, audio/video output, etc. You will have all the features of an Android tablet integrated on your original screen of your vehicle!

Example installation:

Features

- Android Operating system 8.1
- Powerful CPU (1.1GHz Cortex A7 Quad-Core CPU)
- High quality video Display (800x480 & 480x234)
- Supports Android Play-Store (Various applications supported)
- Customize your navigation with your own Apps from the App store
- Customize your Home screen with fast buttons to access your Apps
- Side navigation bar to control your Android system
- 3x Audio/Video RCA input to connect external A/V sources
- 1x Audio RCA output to connect Android audio with your car
- 1x Microphone connection for voice recognition (microphone optional)
- 1x Speaker connection (speaker included)
- GPS connection to navigate without internet access (GPS antenna included)
- 1x camera input with adjustable parking lines
- Multiple ways to store data and communication ports (2x USB 2.0 & 1x microSD Slot)
- Support 3G & 4G via uSIM slot (antenna included)
- Wifi hot spot (antenna included)
- Setting menu to change your display, Apps and other settings

EXCLUSIVE CAR FEATURES

Features:

- XXXXXXXXXXXXX
- XXXXXXXXXXXXX
- XXXXXXXXX

CAMERA FEATURES

Picture in Picture (PiP)

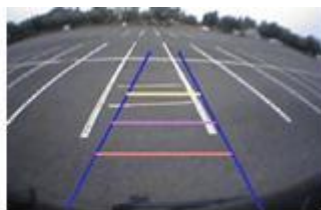
Via the camera input of the interface an aftermarket camera system can be connected to the navigation system. The camera image will be displayed automatically on the screen when the car is put in the reverse gear. The camera input knows 2 views:

- 1: Camera with Picture in Picture of the Parking assist
- 2: Full camera view



Parking guidelines

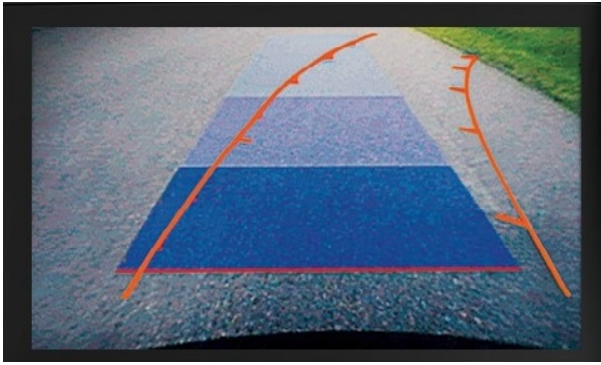
In the camera image on screen parking guidelines can be displayed. This makes it much easier to determine the distance to the object you are driving towards. The guidelines are adjustable horizontal as well as vertical so the lines can be adjusted to the car.



Ajustable guide lines

Intelligent Park Assist System (IPAS)

The interface have also the Intelligent Park Assist System (iPAS). With this function the guidelines will respond on the steering wheel position. The guide lines are adjustable horizontal and vertical via the interface OSD menu.



Front camera input

The front camera input will be activated after leaving the reverse gear.
The camera will switch OFF automatically after 10 km/h or when you press the NAVI button.

NAVPLAY

Customize

Download your favourite Apps via the Play Store or APK uploader to customize your NAVplay, like;

- Video: Youtube / Netflix / Ziggo / Proximus / Videoland
- Music: Spotify / Sound Cloud / PODcast
- Navigation: iGo / Waze / Goolge maps
- Radio: Radium for Internet Radio / Nederland FM / Radio.net
- Communication: Skype / Carplay / Android Auto

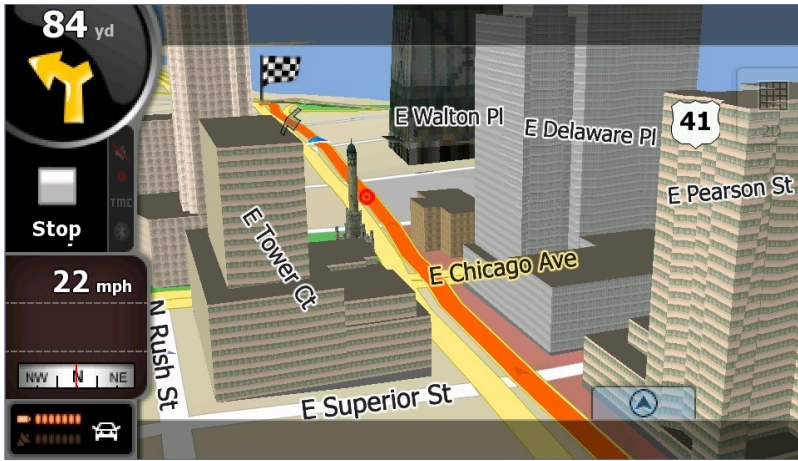
Customize your own home screen via the Quick Launch menu



Navigation

Download your favourite navigation system like;

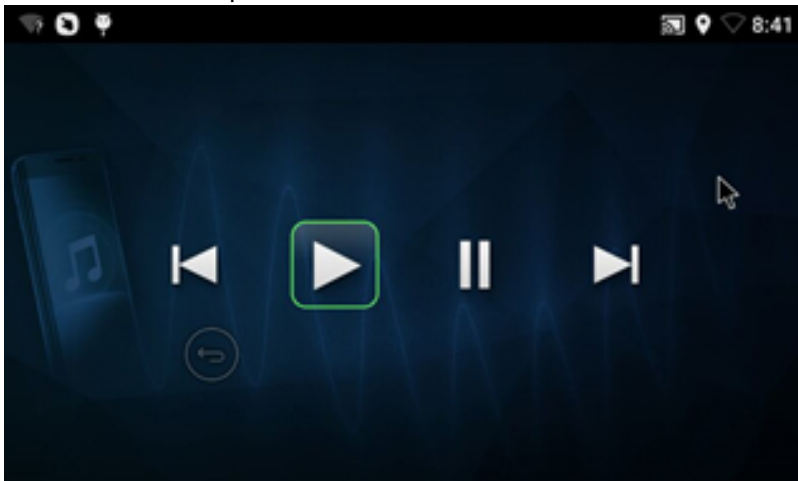
- iGO
- Goolge maps
- WAZE



Media

The NAVplay is equipped with several media inputs such as;

- Bluetooth streaming
- Dual USB 2.0 input (media)
- Micro SD slot (up to 64GB)
- Audio output via RCA
- Audio output via Bluetooth
- USB OTG input



Internet

The NAVplay is equipped with a WiFi connection that can be connected to the Internet. In addition, it is also possible to create an 3G/4G Internet connection (via the uSIM slot).

PACKAGE CONTENTS

The following is provided in the set:

- Specific video interface (IF-PO-PCM41PHV): 1x
- NAVplay module: 1x

- Dual USB cable (HARETC0111): 1x
- Dipol antenna (ETCETC0332): 2x
- Dipol extension cable (HAGPS0006): 2x
- RGB output cable (HRGBCA00025): 1x

Resistive touch (HTOUCH0022): 1x
Power supply cable (HPOWER0137): 1x
GPS antenna fakra (GPSANT003): 1x
Speaker (SPEAKER007): 1x
Button (HARETC0001): 1x
MULTI kabel (HARETC0208): 1x

- Installation- & user instructions
- Warranty

NOTES

- It is essential to have an Aux-in
- We recommend that the installation will be performed by a qualified specialist

COMPATIBILITY

Compatible with the following models

Citroen:

C3	2015-201>
DS3	2015-201>
C4	2014-201>
C4 Picasso	2014-201>
DS4	2015-201>
C5	2015-201>
DS5	2015-201>
Berlingo*	2015-201>
Jumpy	2015-201>

Peugeot:

208	10/2013-201>
2008	10/2013-201>
308	10/2013-201>
508	09/2014-201>

Remarks:

- When using OEM bluetooth carkit, it can be possible that when you change from navigation to OEM radio screen the bluetooth connection will be cuted.
- When using the media inputs, audio output of the NIQ kit must be connected with the AUX input of the car.
- Voice guidens goes via the included speaker and via the OEM system when the audio

output is connected with the car.