



## DESCRIPTION

---

### General

With the NAVconnect camera interface it is possible to connect an aftermarket Front & Rear camera to the original Comand NTG4 Online system of Mercedes (5.8" & 7.0").

### Features

- 1x Rear camera input
- 1x Front camera input (with auto switch OFF)
- Auto switch to rear camera input when car is in reverse
- Auto switch to front camera input when leaving reverse gear
- iPAS parking lines (moveable grid lines)
- Adjustable parking lines via OSD menu
- Picture in Picture overlay function of the original parking sensors
- OEM steering wheel button support (to activate front camera input manually)
- Support NTSC & PAL video signals
- Support Comand & Audio20 (Becker)
- 3 Year warranty & Support

## OEM BUTTON

---



Section	Button	Operation	Function
NTG45	SWC BACK button	Long Press	Mode switch
	SWC BACK button	Short Press	Back to OEM

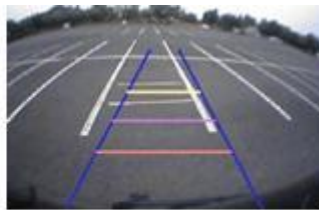
## CAMERA FEATURES

### Rear camera input with Parking guidelines

Rear camera input with parking guidelines option.

The guidelines makes it much easier to determine the distance to the object you are driving towards.

The guidelines are adjustable horizontal as well as vertical so the lines can be adjusted to the car.



**Ajustable guide lines**

### Front camera input

Front camera input which will be selected after leaving the reverse gear.

Via the OSD menu you can select show time:

- 3 sec
- 5 sec
- 10 sec
- 15 sec

### Picture in Picture (PiP)

Picture in Picture overlay function of the original parking sensors



## NOTES

---

- We recommend that the installation will be performed by a qualified specialist
- Check the other tabs for "Compatibility" - "Package contents" - "Product specifications"

## LEGAL INFORMATION

---

The driver of the vehicle should not be inferred from the motion images. In many countries, watching movies while driving is prohibited. Therefore we accept no responsibility for material or personal injuries, directly or indirectly, due to installation of the interface modules.

Interface and Software basic information:

The NavInc interfaces are no navigation systems or screens to replace the navigation system. The NavInc interfaces enable the possibilities to connect different Audio/Video sources to the navigation system.

Manufacturers create adjusted software and hardware versions, options and enhancements which ensures that the compatibility of the products cannot be guaranteed 100%. Compatibility lists are based on customer feedback and experiences and will constantly be updated for optimal customer support.



## REQUIREMENTS

---

<b>AUDIO OUTPUT</b>	The interface inserts ONLY video signals into the infotainment. It is essential to have an Aux-in, when using audio from an external AV source.
<b>CVBS</b>	Only compatible with NTSC sources.
<b>LVDS</b>	Not available.
<b>SCREEN</b>	Interface is compatible with 5.8" & 7" monitors

<b>FRONT CAMERA</b>	The front camera input will automatically switch after leaving the reverse gear. You can set the display time in seconds via the OSD menu (1-15 sec). It is also possible to select the FRONT camera input manually
<b>OEM REAR CAMERA</b>	The interface does not switch back automatically to the OEM rear camera input when the reverse gear is engaged.
<b>GUIDELINES</b>	iPAS & Static lines are available via the interface OSD menu
<b>iPAS</b>	iPAS option is available (moveable grid lines)
<b>PIP</b>	PIP option is available for original parking sensor overlay (Picture in Picture)
<b>REAR SELECT CAMERA INPUT</b>	When interface won't respond on reverse CAN, please use the 12V reverse detection wire (grey wire)
<b>INSTALLATION</b>	We recommend that the installation will be performed by a qualified specialist
<b>NOTE</b>	