



DESCRIPTION

General

Brake light camera VW T6 & T6.1 (tailgate) NTSC

Features

- CMOS 1/3 Lens
- Resolution 1280x720 pixels (NTSC)
- 1000TV lines
- Ignition Power proof (+15)
- IP68 Waterproof
- E-mark certification: E9-10R.05.1811
- CE-mark: EN 55022: 2010; EN 61000-3-2:2006+A1:2009+A2:2009;
EN61000-3-3:2008; EN 55024:2010
- FCC-mark: ANSI C63.4-2003
- 2 Year warranty & Support

EXCLUSIVE CAMERA FEATURES

Adjustable head

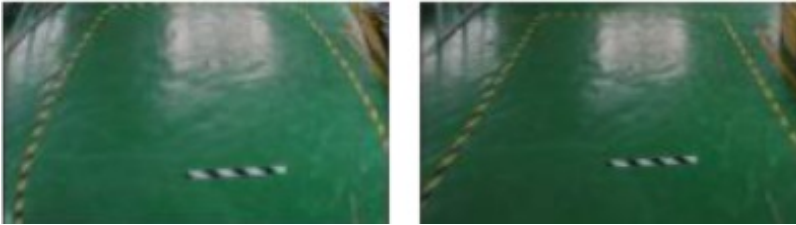
Possible to adjust the camera lens.

Angle Adjustable 30°



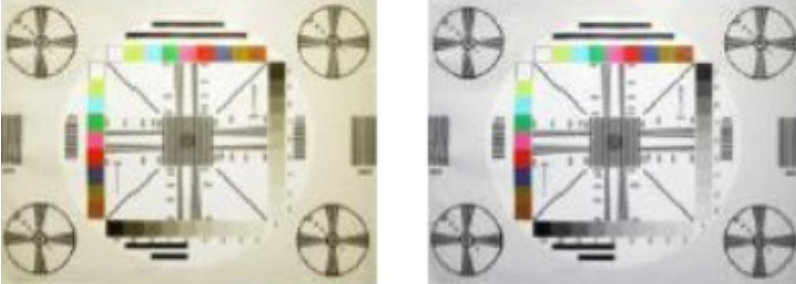
Bulging auto correction

Unwanted bulging in the camera image is automatically corrected.



Discoloration auto correction

Unwanted discolorations in the camera image is automatically corrected.



Overlighting auto correction

The appearance of a bright background or lamps in the camera image is automatically corrected.



Ignition Power proof (+15)

It is possible to connect the powersupply to an ignition feed (+15), because we use the highest quality camera.

In this way you are able to watch the camera also in DRIVE gear or via manual selection.

NOTES

- We recommend that the installation will be performed by a qualified specialist
- Check also the other tabs for "Compatibility" - "Package contents" - "Product specifications"

LEGAL NOTICE

Please check before purchase if it is aloud to install this camera and it wont affect your MOT.

COMPATIBLE WITH THE FOLLOWING MODELS:

Dacia Dokker (2012-2021)

Mercedes Citan (2012-2021)

Renault Kangoo (2007-2021)

Mercedes W415 Micro camper