

General:

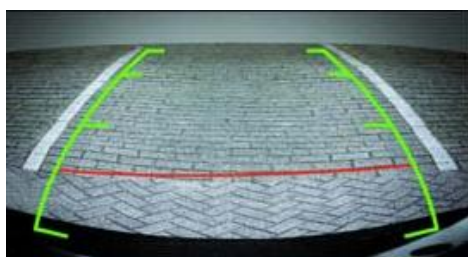
This reversing camera is specially dedicated for Mercedes vehicles. The inconspicuous, robust camera with Sony CCD lens simply replaces the license plate light. Just easy remove the existing license plate light and replace it with the reversing camera, this is also equipped with a light. The camera is complete including plug and play cable kit which allows easy plug and play installation. The camera is waterproof according to the IP67 certification level.

**SONY**

Besides the camera is equipped with guard lines. With these lines you can easily stipulate the distance to an object behind the car.

Features:

- 1/3" SONY CCD lens
- 600 TV lines
- Guard lines
- Lens angle 170 degrees
- Waterproof according to IP67 certification level
- Black Light Compensation
- Display in mirror image
- Automatic color correction
- Motion message

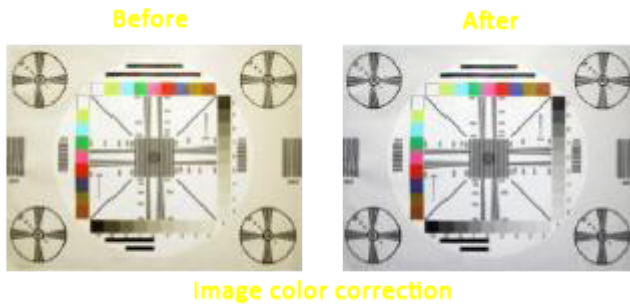


The camera shows static picture lines. These are guides to which the distance of the object can be determined where you drive your car to. Ideal for parking.

Image distortion correction**Before****After****image distortion correction**

The camera runs on intelligent software. As a result the unwanted bulging in the camera image is automatically corrected.

Image color correction



The camera runs on intelligent software. As a result the unwanted discolorations in the camera image is automatically corrected.

Back Light Compensation



The camera runs on intelligent software. As a result the appearance of a bright background or lamps in the camera image is automatically corrected.

Motion message:

If there are moving objects in the image as; pedestrians, children or animals a pedestrian warning icon will blink in the upper right corner of the camera.

The following is provided in the set:

- Audi reversing camera NTSC with license plate lamp
- Video extension cable 5 meter (RCA)
- Installation manual
- Invoice
- Warranty

Additional information:

- Check before you order the camera for the compatibility on the tab "Compatibility" or the model and the measurements of the camera match with the license plate lamp.
- With a multimedia interface or video interface it is possible to connect the camera with the original navigation system, ask for the possibilities.
- Concerns a high-end SONY CCD lens, so no cheap CMOS lens

Technical features:

- IP rating: IP67 (Water proof)
- Image Sensors : Colour 1/3"SONY CCD
- TV System: NTSC

- Effective Pixels: NTSC 752x582
- Sensing Area: 4.9 × 3.7 mm
- Horizontal Resolution: 480 TV Line
- Horizontal Sync. Frequency: 15.625 / 15.734 kHz
- Vertical Sync. Frequency : 50/60 Hz
- Video output: 1Vp-p,75Ohm
- Gamma Consumption: 0.45
- Auto Gain Control: Automatic
- Back Light Compensation: Automatic
- S/N Ratio: Better than 48dB
- Lens Angle: 170 ° (Degrees)
- Current Consumption: 150mA
- Power Supply: DC +12V (10%)
- Operating Temperature: -20 C to +70 C
- Storage Temperature : -40 C to +80 C
- Connection: RCA
- Image: Mirror

Compatible with:

S-Class (W220) 1998-2002
 S-Class (W220) 2002-2005

* Check before you order the camera for the compatibility on the tab "Compatibility" or the model and the measurements of the camera match with the license plate light.

Remarks:

- The license plate lights of the above mentioned car models may vary.
- Check before you order the camera for the compatibility on the tab "Compatibility" or the model and the measurements of the camera match with the license plate light.
- Check by use of the picture if the mounting is the same as with the license plate light.

Measurements:

The dimensions are external. The camera has the following dimensions.

- Length: 54 mm
- Width: 47 mm

